

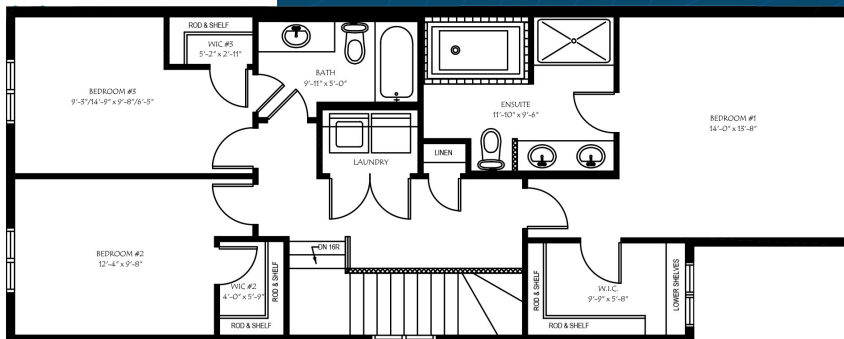
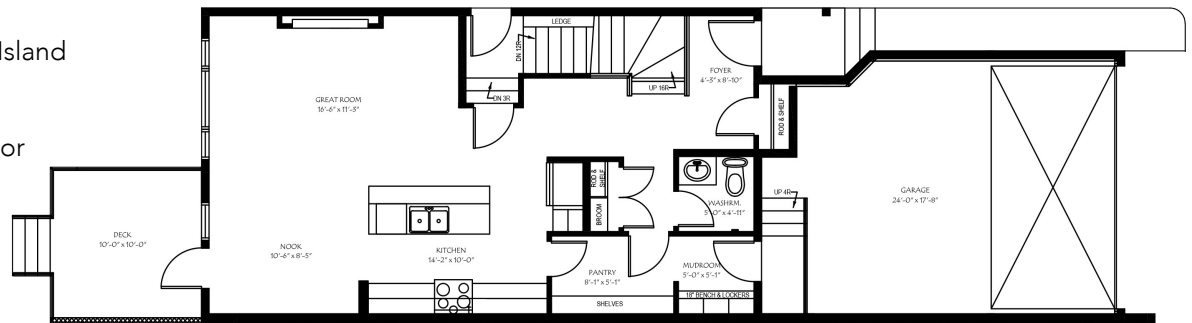


## PROPERTY HIGHLIGHTS

- ✔ 3 Bedrooms (2 with attached Bathrooms)
- ✔ 2.5 Bathrooms
- ✔ Separate Side Entrance to Basement
- ✔ Large Kitchen with 7' Island
- ✔ Walkthrough Pantry
- ✔ 9' Ceilings on Mainfloor and Basement
- ✔ 8' Overhead Garage Door

**1722**sq.ft

### + MAIN FLOOR PLAN 791 sq.ft.



### + SECOND FLOOR PLAN 931 sq.ft.

## FINISHES INCLUDE

- ✔ Quartz Countertops Throughout
- ✔ Tiles in all Washrooms and Laundry
- ✔ Railing with Metal Spindles
- ✔ 40 oz Carpet on Second Floor
- ✔ Floor-To-Ceiling Cabinets In Kitchen
- ✔ Upgraded Electrical & Plumbing Fixtures
- ✔ Glass Shower Enclosures